



jordanfishwick

1 Houseman Crescent, M20 2JA
£1,250 Per Calendar Month



Houseman Crescent West Didsbury M20 2JA

£1,250 Per Calendar Month



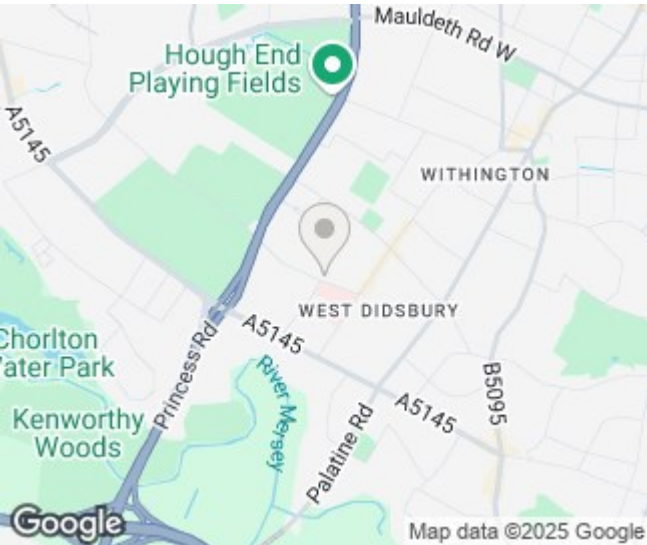
The Property

*** AVAILABLE FEBRUARY *** A most impressive garden apartment with stylish living space throughout, generous decked terrace and a great location in West Didsbury perfectly suited for a single occupant or couple on a short term let. This particular property forms part of the popular Didsbury Gate development, which is an impressive conversion of a Victorian building, lying within beautifully landscaped gardens and grounds. The tastefully presented accommodation space includes a generous living room with high ceilings and French doors to the decked terrace, modern fitted kitchen with integrated appliances, double bedroom with fitted furniture and separate access to the terrace, contemporary and recently fitted shower room with white suite and chrome fittings and a good-sized hallway with useful storage space off. In addition, there are well maintained communal grounds and allocated gated parking. Fully Furnished. 6-month tenancy. To arrange a viewing please contact Didsbury.

View our Virtual Tour Here - <https://youtu.be/x2RyHHYUaCo>

EPC Rating C // Council Tax Band C

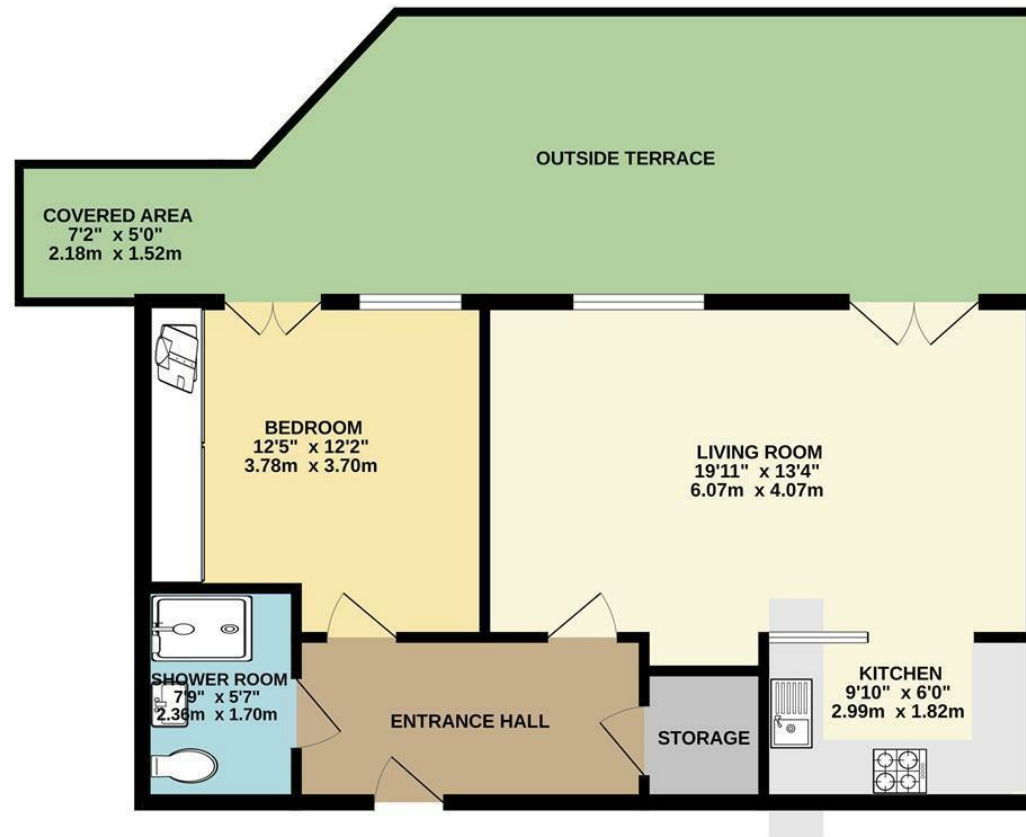
- Available February
- One Double Bedroom
- Ground Floor Apartment
- Furnished
- Perfect for Single Occupant or Couples
- Short Term Let
- Great Location of West Didsbury
- Parking
- Council Tax Band C
- EPC Rating C



Energy Efficiency Rating		
	Current	Potential
Very energy efficient - lower running costs		
(92 plus) A		
(81-91) B		
(69-80) C	71	78
(55-68) D		
(39-54) E		
(21-38) F		
(1-20) G		
Not energy efficient - higher running costs		
England & Wales	EU Directive 2002/91/EC	



585 sq.ft. (54.4 sq.m.) approx.



TOTAL FLOOR AREA : 585 sq.ft. (54.4 sq.m.) approx.
Measurements are approximate. Not to scale. Illustrative purposes only.
Made with Metropix ©2024



These particulars are believed to be accurate but they are not guaranteed and do not form a contract. Neither Jordan Fishwick nor the vendor or lessor accept any responsibility in respect of these particulars, which are not intended to be statements or representations of fact and any intending purchaser or lessee must satisfy himself by inspection or otherwise as to the correctness of each of the statements contained in these particulars. Any floorplans on this brochure are for illustrative purposes only and are not necessarily to scale.

Offices at: Offices at Chorlton, Didsbury, Disley, Hale, Glossop, Macclesfield, Manchester Deansgate, Manchester Whitworth Street, New Mills, Sale, Wilmslow and Withington